

J.F. Oberlin University

Institute for Japanese Language and Culture



Courses

A. Graduate School Admission Course

This course provides preparatory education for international students who wish to enter a Japanese graduate school. Students enrolled in this course will acquire Japanese language skills needed for their future studies as well as specialized knowledge appropriate to their fields.

B. Undergraduate Transfer Course

This course provides preparatory education for international students who wish to transfer to a Japanese university as juniors. Students enrolled in this course will acquire Japanese language skills needed for their future studies as well as specialized knowledge appropriate to their fields.

C. University Admission Course

This course is designed for applicants who wish to enter a Japanese university as freshmen. The aim of the course is to provide students with sufficient Japanese language and other academic skills to pass university examinations, achieve high scores on the Examination for Japanese University Admission for International Students (EJU), and pass level N1 of the Japanese Language Proficiency Test.

D. Special Japanese Language Course

This is a short-term study course designed for applicants who are current undergraduate or graduate students and who intend to pursue study or research in Japan. (Applicants must submit Plan for Study and Research.)

*Please confirm detailed information about deadlines from the newest application guidebook.

Our program has five special characteristics

1. Applicants are accepted irrespective of the field of study they wish to pursue upon completion of our course.
2. In addition to Japanese language instruction, we also offer extensive counseling on undergraduate and graduate school options.
3. Students of our Institute who meet certain requirements can enroll for credit (and be issued transcripts) in courses at the university level.
4. Students can use facilities at J. F. Oberlin University as regular university students.
5. Students have ample opportunities to meet and exchange information with undergraduate, graduate and fellow exchange students at J. F. Oberlin University.

Japanese language education at our Institute



Content and Goals

A typical schedule includes 15 90-minute classes per week. The Institute's goal is to provide students with fundamental competence in the Japanese language as well as the skills necessary to excel in a Japanese university or graduate school. Education at the Institute therefore emphasizes three things: general Japanese language skills, specialized knowledge, and one-to-one tutoring. General Japanese language skills are taught with stress on four areas: speaking, listening, reading, and writing, with instruction tailored to each student's abilities. Specialized knowledge is taught with a focus on the tests needed to enter university or graduate school: students planning to enter universities will learn what they need to do well on the Examination for Japanese University Admission for International Students, and students planning to enter graduate schools will learn what they need to make presentations, read scholarly writings, and write research proposals. One-to-one tutoring helps strengthen any weak points that a student might have and supports the students as each individual learns to take the initiative in his or her studies.

We hope that by studying at the Institute, students will not simply be able to realize their short-term academic goals but will develop the Japanese skills and research skills that they will need later in their academic pursuits.

Sample class schedule

Institute for Japanese Language and Culture Sample Class Schedule Sample Class Schedule

| | | Mon. | | | Tue. | | | Wed. | | | Thu. | | | Fri. | | |
|---------------------|------------|---|--------------------|--|---|--------------------|------------------------------|--|--------------------------------------|-----------------------------|---|--------------------|------------------------------|---|---|-----------------------------|
| 9:00 - 10:30 | Subject | Core Japanese | | | Core Japanese | | | Core Japanese | | | Core Japanese | | | Core Japanese | | |
| | Content | Comprehensive Japanese class by skill level | | | Comprehensive Japanese class by skill level | | | Comprehensive Japanese class by skill level | | | Comprehensive Japanese class by skill level | | | Comprehensive Japanese class by skill level | | |
| 10:40 - 12:10 | Subject | Basic Writing Skills | | Core Japanese (Preparation for MA studies) | Core Japanese | | | Japanese Society through News | | | Core Japanese | | | Core Japanese (Preparation for MA studies) | Core Japanese | |
| | Content | Basic Writing Skills (Composition) by skill level | | Writing research plan | Comprehensive Japanese class by skill level | | | Japanese for current affairs, Japanese social circumstances etc. | | | Comprehensive Japanese class by skill level | | | Writing research plan | Comprehensive Japanese class by skill level | |
| 12:10 - 12:50 | Lunch time | | | | | | | | | | | | | | | |
| 12:50 - 14:20 | Subject | Core Japanese | EJU | Tutorial | Core Japanese | EJU | Tutorial | Core Japanese (Preparation for MA studies) | Core Japanese | JLPT | Core Japanese | EJU | Tutorial | Core Japanese (Preparation for MA studies) | Core Japanese | JLPT |
| | Content | Comprehensive Japanese class (Basic) | EJU countermeasure | Support for autonomous study | Comprehensive Japanese class (Basic) | EJU countermeasure | Support for autonomous study | Comprehensive Japanese class (Advanced) | Comprehensive Japanese class (Basic) | JLPT countermeasure (N1/N2) | Comprehensive Japanese class (Basic) | EJU countermeasure | Support for autonomous study | Comprehensive Japanese class (Advanced) | Comprehensive Japanese class (Basic) | JLPT countermeasure (N1/N2) |

*Numbers of class are different from each semester. Ex. 2016 spring semester: 6 level

*Students who are in advanced class can take class in undergraduate. Their class schedule is different from class schedule above (They need permission by education chief.)

Prospects after completing the program

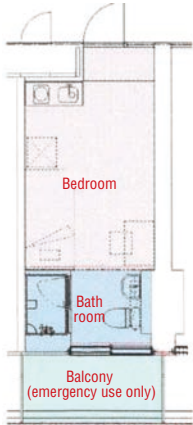


| | Level at the start of the program | Aim when the program is completed | Anticipated status after completion |
|--------------|--|--|---|
| Basic | Japanese language ability equivalent to JLPT level N4-N5, EJU inexperienced | Japanese language ability equivalent to JLPT level N2-N3, EJU score around 250 | Undergraduate (freshman or, for transfer students, junior) |
| Intermediate | Japanese language ability equivalent to JLPT level N3, EJU score around 150-200 | Japanese language ability equivalent to JLPT level N1-N2, EJU score around 280 | Undergraduate (freshman or, for transfer students, junior) Graduate school |
| Advanced | Japanese language ability equivalent to JLPT level N1-N2, EJU score around 200-250 | Japanese language ability equivalent to JLPT level N1, EJU score around 300 | Undergraduate (freshman or, for transfer students, junior) Graduate school |

*Notes

JLPT (Japanese Language Proficiency Test) does not include academic skills and composition. Therefore, please regard it merely as a rough target. To attain your goals, you will need to study not only in class but also after school and on holidays at home. You will need to pass the JLPT level N2. To enter graduate school, you will need to pass the JLPT level N1. These are minimum requirements.

Housing information(Fuchinobe International House)



A new residence hall opened in 2010. The hall is conveniently located about a four-minute walk from JR Fuchinobe Station and the Planet Fuchinobe Campus (PFC). It is just a short ride by shuttle bus to the Machida Campus, where most classes are held.

Exchange students from all over the world live together in the hall, and by living and studying together students can have a rich experience of foreign cultures and cultural exchange.

Capacity: 245 residents (single-occupancy rooms)
Size: 17.63 square meters (for type A rooms)

- Each single room comes equipped with a bathroom (with toilet and shower) and kitchenette.

- A security guard is on duty at night and the hall is equipped with a full security system.
- The hall has a laundry room (coin-operated) and a lounge.

Cost

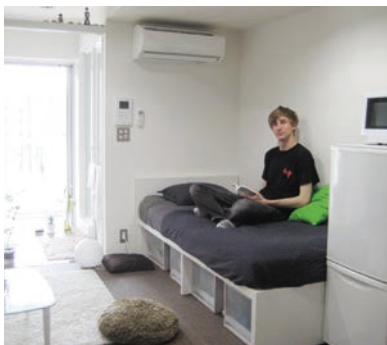
| Spring Semeste (April - September) | Autumn Semester (September - January) |
|---------------------------------------|--|
| 220,000 yen | 275,000 yen |

Cost includes utilities and Internet use up to a maximum of 10,000 yen per month.

Meals not included.

Costs and facilities are as of the publication of this brochure, and are subject to change without notice.

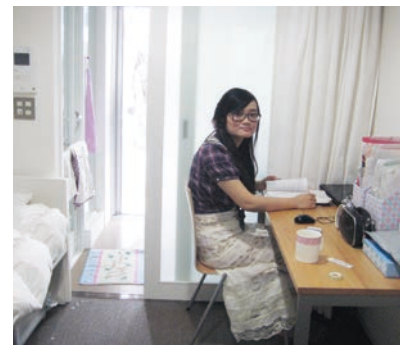
Colin Kulstad



The rooms at Fuchinobe International House are all singles, so you have privacy when you need it. Still, you're surrounded by foreign students all working towards the same goals as you, so it's easy to make friends and find help when you need it.

Wang Dandan

The rooms are equipped with microwave ovens, refrigerators, and other necessary items, so even when you've just arrived in Japan, you can jump right into your new life. That's really helpful. Also, there are friends all around you, so it's easy to get together, for example, to cook meals as a group.



Messages from graduates



Jiang Meiling

China

The University of
Tokyo Graduate School of
Engineering

When I came to Japan, it was hard to get used to life here. The teachers at the Institute gave me advice, and by keeping in touch with the teachers at the graduate school to which I planned to apply, I was able to prepare sufficiently to be admitted.

To prospective Institute students I'd offer this advice: no matter what happens, don't lose sight of your goal, and do your very best.



Meghan Strong

U. S. A

J. F. Oberlin University
Graduate School of
Language Education
Master Degree Candidate

At the Institute I learned not just Japanese language but how to write papers in Japanese, as well as other skills that I needed to survive in graduate school. All my courses were helpful, and I worked hard in all of them. Now I'm in graduate school, specializing in Japanese education, and when I read academic material, I try to evaluate it critically, comparing the ideas and opinions that I read with my own ideas and opinions.

I would advise prospective Institute students to think carefully about what's most important in their studies. With your goals in mind, study hard!



Sun Danying

China

J. F. Oberlin University College
of Arts and Sciences
Third-year transfer student

At the Institute I studied grammar, vocabulary, and composition especially hard. Since entering university, I've had to spend so much time learning about my field of study that I haven't had time to practice Japanese. I really appreciate the time I spent at the Institute, concentrating on Japanese. In university you have to write lots of reports, and to be a good writer, you need to read plenty of books.

If you're planning to study at the Institute, while you're there, think carefully about what you want to achieve and pick up as many skills as possible to help you in university or graduate school.



Nikolaij Ouillon

Germany

J. F. Oberlin University College
of Business Management

Coming from a country that doesn't use *kanji*, I found the *kanji* practice at the Institute to be especially helpful. While studying at the Institute, I made a major effort to do everything entirely in Japanese.

Since entering the university, I've found that I really need more practice in writing reports. I pay special attention to bureaucratic and technical terms when I'm studying. However, technical terms and grammar aren't everything; casual conversation is also important. I advise trying to master everyday spoken Japanese and make lots of Japanese friends while I'm at the university.

Academic calendar



| For students starting in April | | |
|--------------------------------|-----------|--|
| Spring Semester | April | Entrance ceremony Orientation Placement test Classes begin |
| | May | Mid-term examinations |
| | June | Japanese speech contest |
| | July | Final examinations |
| | August | Summer vacation begins |
| Autumn Semester | September | Summer vacation ends Orientation Placement test Classes begin |
| | October | Japanese karaoke competition |
| | November | School festival Mid-term examinations |
| | December | Examination for Institute for Japanese Language and Culture students intending to enter J. F. Oberlin University Winter vacation begins |
| | January | New Year's celebration at Izu Kogen Club Winter vacation ends J. F. Oberlin entrance examination for Institute for Japanese Language and Culture Final examinations |
| | February | Spring vacation begins |
| | March | Graduation |

| For students starting in September | | |
|------------------------------------|-----------|---|
| Autumn Semester | September | Entrance ceremony Orientation Placement test Classes begin |
| | October | Japanese karaoke competition |
| | November | School festival Mid-term examinations |
| | December | Winter vacation begins |
| | January | New Year's celebration at Izu Kogen Club Winter vacation ends Final examinations |
| Spring Semester | February | Spring vacation begins |
| | April | Spring vacation ends Orientation Placement test Classes begin |
| | May | Examination for Institute for Japanese Language and Culture students intending to enter J. F. Oberlin University Mid-term examinations |
| | June | Japanese speech contest J. F. Oberlin entrance examination for Institute for Japanese Language and Culture |
| | July | Final examinations |
| | August | Summer vacation begins |
| | September | Graduation |

Admission schedule & Financial Information

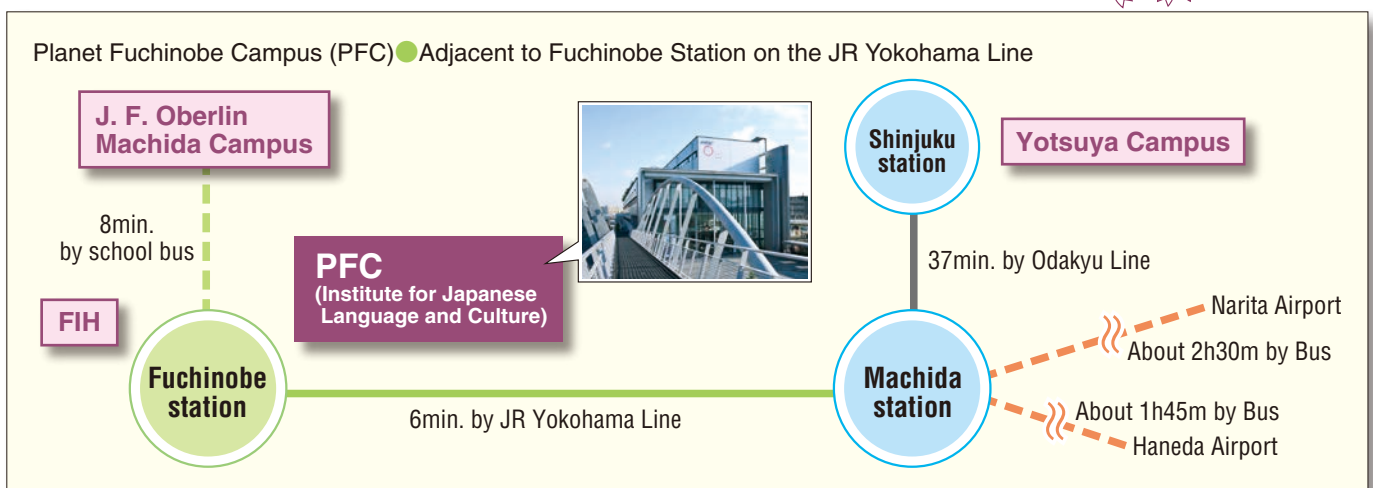


Please confirm detailed information about deadlines from the newest application guidebook

| ■ Important Dates for Applicants | Spring term | Autumn term | ■ Financial Information |
|---|----------------------------|----------------------------|---------------------------------|
| Application period—see notes below | Late August to mid-October | Late February to mid-April | Admission fee 15,000 yen |
| Deadline for payment of application fee | Late October | Late April | Entrance fee 100,000 yen |
| Announcement of successful applicants | Mid-November | Mid-May | Tuition 500,000 yen |
| Mailing of acceptance/rejection letters | Mid-November | Mid-May | |
| Remit entrance fee and tuition | Mid-December | Mid-June | |
| Visa application period | Late December onward | Late June onward | |
| Enter Japan and begin studies | Early April | Early September | |

Notes:
 • Please request application materials during the application period using the form on this website.
 • If for any reason you are unable to request application materials through the website, please download the PDF, fill it in, and fax it or send it as an e-mail attachment.

Access Guide & Contact Information



J. F. Oberlin University Institute for Japanese Language and Culture

4-16-1 Fuchinobe, Sagami-hara-shi, Chuo-ku, Kanagawa-ken 252-0206, Japan
 TEL: +81-(0)42-704-7041 / FAX: +81-(0)42-704-7033 / E-MAIL: rywx@obirin.ac.jp
 TEL: Weekdays from 9:00 a.m. to 5:00 p.m. (GMT+9:00) / FAX: 24 hours